



KANSAS GEOLOGICAL SOCIETY

# BULLETIN

Volume 99 Number 3

May - June 2024

Established 1925

## IN THIS ISSUE

**6th Biennial Field Conference for MCS of AAPG**      page 10-11



Your 1/8 page ad here

**Use Your KGS Library  
For All Your Printing Needs**

Old photos?  
Old documents?

We can scan them for you!

**Robert F. Walters Digital Library**

The most complete source for Kansas data

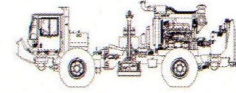
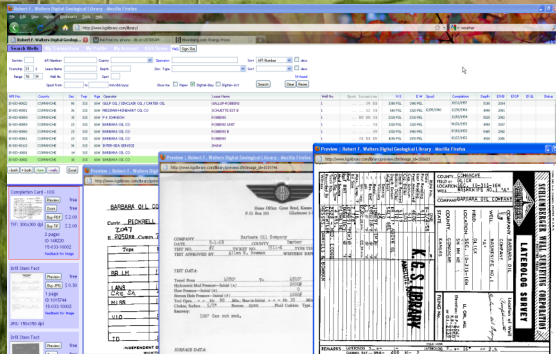
Database updated nightly

Day or Night

You can get to the data as you need it

[www.kgslibrary.com](http://www.kgslibrary.com)

To Join: call 316-265-8676



**Proudly Celebrating 25+ Years  
Acquiring Seismic Data Throughout the  
Continental United States**

**WICHITA**

Nicolle Jausel  
(316) 636-5552

Nicolle@paragongeo.com

**DENVER**

Kim Nordberg  
(303) 888-8885

Knordberg@paragongeo.com

**HOUSTON**

Brent Propst  
(832) 643-5158

Bpropst@paragongeo.com

**OKLAHOMA CITY**

Joe Broussard  
(405) 213-9859

Jbroussard@paragongeo.com

website: [www.paragongeo.com](http://www.paragongeo.com)

**We Invite You**

**To join the**

***Kansas Geological  
Foundation***

***\$50.00 membership is  
tax deductible***

***Call 316-265-8676***

***Or send checks to:***

***Kansas Geological Foundation***

***1704 S. Baehr***

***Wichita, KS 67209***

# Table of Contents

---

**Features:**      **6th Biennial Field Conference of MCS (1st announcement)**      **10-11**

**KGS Events:**      **No Events scheduled**

## **Departments & Columns:**

<b>KGS Tech Talks</b>	<b>4</b>
<b>Advertiser's Directory</b>	<b>7</b>
<b>In Memoriam</b>	<b>13</b>
<b>Professional Directory</b>	<b>14</b>
<b>Kansas Geological Foundation Cornerstone and KGF News</b>	<b>17-19</b>
<b>Kansas Geological Foundation Memorials</b>	<b>20-22</b>
<b>Exploration Hilights    by John Morrison - IOG</b>	<b>24-25</b>

## **ON THE COVER:**

**Diabase dike intruding metaconglomerate, NE Maine**

**Photo by Marli Miller**

The Kansas Geological Society Bulletin, which is published bimonthly in electronic format, seeks short papers dealing with any aspect of Kansas geology, including petroleum geology, studies of producing oil or gas fields, and outcrop or conceptual studies. Maximum length of papers is 6 pages as they appear in the Bulletin, including text, references, figures and/or tables, and figure/table captions. Inquiries regarding manuscripts should be sent to [manager@kgslibrary.com](mailto:manager@kgslibrary.com) or mailed to 1704 S. Baehr, Wichita, KS 67209. Specific guidelines for manuscript submission appear in each issue of the Bulletin, which can also be accessed on-line at the Kansas Geological Society web site at <http://www.kgslibrary.com>

# SOCIETY Technical Meetings

**All Technical Meetings will be on Zoom**

- May 8** Ken Johnson, OGS retired - TBD
- May 22** Darren Brown, City of Wichita: “Groundwater Remediation of the Gilbert and Mosley and North Industrial Corridor Sites in Wichita, Kansas”
- June 12** John McLeod, “Re-Thinking the Woodford Petroleum System in Oklahoma”
- June 26** Bruce Black, Black Exploration, “Helium Exploration in the Rio Grand Rift”

Please remember to check the website for the most up to date information on Technical Talks

*<http://www.kgslibrary.com/techtalks.cfm>*

*Note: For those geologists who need 30 professional development hours (pdh) to renew their licenses, there will be a sign-in sheet at each presentation and also a certificate of attendance.*



*The New Home of the KGS*

*1704 S. Baehr*

# KANSAS GEOLOGICAL SOCIETY



## BOARD OF DIRECTORS

### PRESIDENT

Doug Davis

### PRESIDENT-ELECT

Seth Evenson

### SECRETARY

Lori Landes

### TREASURER

Doug Louis

### DIRECTORS

Kimberly Black  
David Barker  
Preston Doll

### ADVISORS

Jon Callen  
Dick Jordan

## BULLETIN STAFF

### EDITOR

Wes Hansen (316) 772-6188

### ADVERTISING

Kent Scribner (316) 640-1154

### MEMORIALS

Wesley Hansen (316) 772-6188

### EXPLORATION HIGHLIGHTS

John H. Morrison, III  
Independent O&G (316) 263-8281

### STATE SURVEY

KS Geological Survey (785) 864-3965

### SOCIETY NEWS

KGS Library (316) 265-8676

### MANAGER

Angela Forrest (316) 265-8676

## COMMITTEE CHAIRMEN

### Advertising

Kent Scribner

### Advisory

### Annual Banquet

Doug Davis

### Bulletin

Wesley Hansen

### Computer Committee

### Continuing Education

### Distinguished Awards

Brian Fisher

### Environmental

Kent Matson

### Field Trip

Jerry Honas

### Fishing Tournament

### Future Plans

### Golf

Dave Barker

### Historian

### Library

Ted Jochems

### Membership

Larry Friend

### Nomenclature

John H. Morrison, III

### Picnic

Beth Isern

### Public Relations

### Shooting Tournament

Seth Evenson

### Technical Programs

Doug Davis

### Technical Committee

Ryan Dixon

### Finance Committee

Tim Hellman, Chairman

Members: Rocky Milford, Chuck Brewer, David Doyel, and Tom Funk

## K.G.S. LIBRARY

PHONE 316-265-8676 FAX 316-265-1013

email: [frontdesk@kgslibrary.com](mailto:frontdesk@kgslibrary.com) or

Web: [www.kgslibrary.com](http://www.kgslibrary.com)

## A.A.P.G. DELEGATES

Dennis Hedke  
2025

Wesley Hansen  
2025

The KGS *Bulletin* is published bi-monthly by the Kansas Geological Society, with offices at 1704 S. Baehr, Wichita, Kansas 67209 Copyright 2024, The Kansas Geological Society. The purpose of the *Bulletin* is to keep members informed of the activities of the Society and to encourage the exchange and dissemination of technical information related to the Geological profession. Subscription to the *Bulletin* is by membership in the Kansas Geological Society. Limited permission is hereby given by the KGS to photocopy any material appearing in the KGS *BULLETIN* for the non-commercial purpose of scientific or educational advancement. The KGS, a scientific society, neither adopts nor supports positions of advocacy, we provide this and other forums for the presentation of diverse opinions and positions. Opinions presented in these publications do not reflect official positions of the Society.



### Nine Trucks Serving

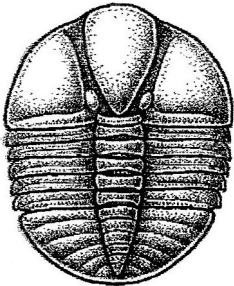
Kansas--Colorado--Texas--Nebraska--Illinois

DST's

Back Pressure testing (G1 7 G2)

Slick line services using the same Weatherford

Electronic Pressure Gauges used on DST's



1-800-728-5369

FAX 1-785-625-5620

[www.trilobitetesting.com](http://www.trilobitetesting.com)

[trilobite@eaglecom.net](mailto:trilobite@eaglecom.net)

SHOPS LOCATED IN:

Hays, KS

Scott City, KS

Pratt, KS

Oberlin, KS

## CAN YOU NAME THE CRITTER?

Sponsored by Trilobite Testing, Inc.

Is your paleo up to date?

If you know the name of the trilobite,  
submit your guess via e-mail to  
[manager@kgslibrary.com](mailto:manager@kgslibrary.com)

Remember that *Trilobite Testing* is  
sponsoring your efforts, so be sure to thank  
Paul Simpson the next time you see him.

**Bulletin committee members and PhD's in  
Paleontology are prohibited from entering.**



### ***Kansas Geological Society (KGS) Medallion for Scientific Distinction and Excellence***

The Kansas Geological Society (KGS) Medallion for Scientific Distinction and Excellence may be given annually for peer-recognized, sustained significant scientific contributions to all facets of applied Kansas geology, including work either in Kansas or in surrounding states if the latter contributions pertain directly and significantly to Kansas geology. No more than one award may be given each year, an award does not have to be given every year, and members of the KGS Awards Committee that handle nominations for this award cannot nominate themselves for this award. The candidates need not be active KGS members, and they must be living at the time of selection. The primary consideration in the selection of a candidate shall be his or her sustained, published, significant contributions to any facet of Kansas geology. Contributions may be varied in form such as development of geologic concepts, advancement in discovery thinking, and recognized leadership in exploration concepts. Oral and/or written publications in peer-reviewed geological venues is a requisite criterion for any candidate for this award. The name of a candidate shall be presented by the Awards Committee to the KGS Board of Directors for their approval. Once approved, the recipient shall be presented an appropriate award in the form of a medallion or plaque recommended by the Awards Committee and approved by the Board of Directors at the annual business meeting of the society. This is a new award given by the KGS for distinction and achievement in Geological research in Kansas.

Awards Committee members are Sal Mazzullo and Mike Dealy

## AAPG IMAGE and Section Meetings

Image 2024 August 26-29  
George Brown Convention Center  
Houston, TX

6th Biennial Field Conference  
Mid-Continent Section of AAPG  
October 18-20, 2024  
Fort Hays State University  
Hays, KS

## ADVERTISER'S DIRECTORY

Duke Drilling	<i>page</i> 22
Kansas Geological Foundation	16
Murfin Drilling Company, Inc	22
PARAGON Geophysical Services, Inc	2
Professional Directory	14
Trilobite Testing	6
Walters Digital Library	2

Log in to

Walters Digital Library At

[www.kgslibrary.com](http://www.kgslibrary.com)

Log in as our guest

and see the Society's Database

A convenient way to see what you might want to  
order!

Call or email your order to:

316-265-8676

[frontdesk@kgslibrary.com](mailto:frontdesk@kgslibrary.com)

### ADVERTISER'S RATES: 2022

Full Page	B&W	Color
6 issues	\$2,000	\$2,500
3 issues	\$1,080	\$1,325
1 issue	\$480	\$525
<b>1/2 Page</b>		
6 issues	\$1,000	\$1,500
3 issues	\$540	\$825
1 issue	\$225	\$350
<b>1/4 Page</b>		
6 issues	\$600	\$900
3 issues	\$325	\$525
1 issue	\$150	\$250
<b>1/8 Page</b>		
6 issues	\$300	\$500
3 issues	\$175	\$325
1 issue	\$75	\$185
<b>Professional Ad (Business Card)</b>		
6 issues	\$90	\$180

## 2024 KGS Board

President - Doug Davis

VP-President Elect - Seth Evenson

Secretary - Lori Landes

Treasurer - Doug Louis

Directors - Dave Barker Kimberly Black Preston Doll

**We Invite You  
To join**

***Kansas  
Geological  
Foundation***

***\$50.00 membership is  
tax deductible***

***Call 316-265-8676  
Or send checks to:  
Kansas Geological Foundation  
1704 S. Baehr  
Wichita, KS 67209***

***Your Company***

***1/4 page ad***

***here***



# An Open Invitation to Young Geologists to Join AAPG

I would like to extend a special invitation to recent graduates and other young geological professionals to join AAPG. There are many young geologists outside the Wichita area that I have never met. They may work out of Great Bend or Hays, Kansas working with smaller oil and gas producers or working on their own as well site geologists. Kansas does have a future for the foreseeable future. The time is now to meet others from larger regional companies to forge a relationship for future employment. Young minds will be needed to replace those retiring and that other bad option.

I joined AAPG late in my career, much to my regret. I now serve voluntarily as a delegate for the Mid-Continent Section representing the Kansas Geological Society.

Respectfully yours,

Wesley D. Hansen Bulletin Editor and AAPG Delegate



# 2024 AAPG Midcontinent Section Biennial Field Conference

**"The Cretaceous Western Interior Seaway: Depositional  
Environments and Paleontology"**



**DEPARTMENT OF GEOSCIENCES,  
FORT HAYS STATE UNIVERSITY, HAYS KS, 67601**



**18 - 20 October, 2024**

**THE SIXTH BIENNIAL FIELD CONFERENCE  
MID-CONTINENT SECTION AAPG  
OCTOBER 18-20, 2024  
GEOSCIENCES DEPARTMENT  
FT. HAYS STATE UNIVERSITY  
*“THE CRETACEOUS WESTERN INTERIOR SEAWAY:  
DEPOSITIONAL ENVIRONMENTS AND PALEONTOLOGY”***

**Friday Oct. 18**

Registration 10:00 AM - 6:00 PM

Tours of Geosciences Department 10:00 AM - 4:00 PM

Student poster presentation and competition 10:00 AM - 4:00 PM

Keynote Speakers: 1:30 - 4:30 PM

**Nathan A. Randolph, President MCS AAPG**

**Deborah K. Sacrey, President AAPG**

**Dr. Laura Wilson, Chief Curator Sternberg Museum**

**Other Speakers**

Ice Breaker: 5:00 - 7:00 PM. Hors d'oeuvres will be served. Cash Bar

**Saturday Oct. 19**

Loading buses (designated area) 7:30 - 8:00 AM, box lunch provided

Field excursion 8:00 AM - 5:00 PM return to Hays, KS

**Cretaceous Outcroppings**

**Monument Rocks**

**Little Jerusalem Badlands State Park**

Conference Dinner 7:00 - 8:30 PM

**Sunday Oct. 20     Sternberg Museum of Natural History 7:45 AM- 12:00 Noon**

**Additional info to follow**

# Robert F. Walters Digital Library

**Log in as our Guest**

**username: guest**

**password: guest**



**316-265-8676**

**Let Us Print Your Geo Reports  
And Save Your Time For Finding More Oil & Gas**

**Top Quality Color Printing For Our Membership**

**Email your files to: [kgsorders@gmail.com](mailto:kgsorders@gmail.com)**

**Get Your Maps copied at the KGS library  
We can scan, copy, and print up to 44" wide**

**Color or Black & White**

**Solid Color @ \$4.00/sq. ft.**

**Line maps with color @ \$3.00/sq. ft.**

# In Memoriam

## KGS and Industry Members Lost in 2023 and 2024

**2023**

**Bill C. Romig**

**Dean Britting**

**Robert Llewellyn**

**Willis Nigh**

**Richard Cornett**

**Jim Reilly**

**Robert “Bob” Cowdery**

**Chuck Latham**

**I. Wayne Woolsey**

**2024**

**Paul Ramondetta**

**George Jones**

**Cecil O’Brate**

**Bob McCann**



# PROFESSIONAL DIRECTORY

**Kirk Rundle**  
*Consulting Geophysicist*

3D Seismic Design, Acquisition to Processing QC.,  
Interpretation and Analysis, Subsurface Integration  
7340 W. 21st N., Ste. 100  
Wichita, Kansas 67205

Office: 316-721-1421 Fax: 316-721-1843  
Email: kirk@rundlegeo.com

**Covey - The Well Watchers**

“One Thousand Wells and Counting”

**Curtis E. Covey** Wellsite Petroleum Geologist  
Gas Trailer Cell: 316-217-4679 Office: 316-776-0367  
Email: wellsitegeol@gmail.com  
6548 Bedford Circle Derby, Kansas 67037  
Gas Detection Trailer & Internet/Phone Communications



**GRAVITY OIL**  
LLC

**ELI J. FELTS**  
CONSULTING PETROLEUM GEOLOGIST

316.204.5059 EJJELTS47@GMAIL.COM

- VERTICAL & HORIZONTAL WELL-SITE SUPERVISION
- PROSPECT GENERATION & EVALUATION
- WELL-LOG ANALYSIS
- DIGITAL MAPPING SERVICES & GEOLOGICAL REPORTS
- KCC & COMPLIANCE SPECIALIST
- PROFESSIONALLY INSURED

COMPETITIVE PRICING & STATE OF THE ART SERVICES YOU CAN COUNT ON  
CALL TODAY & RECEIVE (1) FREE DAY WELL-SITE TO NEW CLIENTS

**IOGSI INDEPENDENT**  
**OIL & GAS SERVICE, INC.**  
*Digital Well Data You Can Trust*

**JOHN H. MORRISON, III**  
President

www.IOGsi.com Phone: 316-263-8281  
3909 N. Sweet Bay St. Fax: 316-263-0874  
Wichita, Kansas 67226-3501 Email: jmorrison@iogsi.com

Special offer to those who actually read  
the online bulletin  
Wes Hansen will buy the first round on a  
date and place to be announced later.

Text IMIN to 316-772-6188  
First 15 responders only

Your business card ad  
Could be right here  
For only \$90/year

**ROGER L. MARTIN**

*Independent Petroleum Geologist*

200 E 1st St, Ste 405, Wichita, KS 67202

Cell: 316-833-2722 Office: 316-250-6970  
KS Field Cell: 316-655-1227

Email: rogermartingeo@yahoo.com

**WESLEY D. HANSEN**

*Consulting Geologist*

Well site Supervision • Geologic Studies  
PO Box 46 Whitewater, KS 67154  
Office/Mobile: (316) 772-6188  
whansen4651@sbcglobal.net  
Kansas - Colorado - Nebraska  
42 Continuous Years in the Oil Patch

**M. ((Brad))ford Rine, Geologist**

*Licensed, Registered, Certified*

PROSPECT EVALUATION	PROSPECT ORIENTATION
WELL-SITE SUPERVISION	DRLG/COMPL CONSULTATION
RESERVOIR STUDIES	PROPERTY EVALUATION
EXPERT TESTIMONY	BANJO PICKER
100 South Main Suite #415	Email: rinemb@sbcglobal.net
Wichita, Kansas 67202	Office & Cell: (316) 250-5941

**MELLAND ENGINEERING, INC.**

*Petroleum Engineering & Geological Consulting*

**James E. Melland, P.E., P.G.**

President

Office: (620) 241-4621 Fax: (620) 241-2621  
jamesm@mellandengineering.com  
www.mellandengineering.com  
P.O. Box 841, McPherson, KS 67460-0841

**Macklin Armstrong**

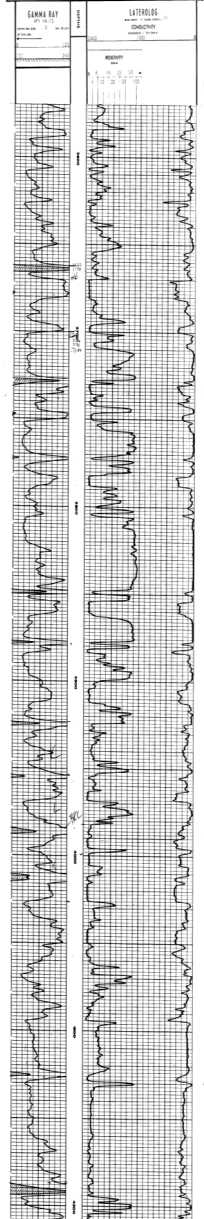
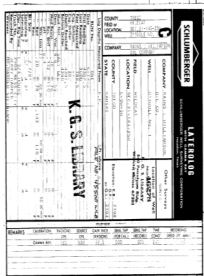
*Consulting Geologist*

Kansas - Colorado - Nebraska

Wellsite Supervision Prospect Evaluation  
armstrong.mac@gmail.com  
316-209-5047

Your business card ad  
Could be right here  
For only \$90/year

*The KGS Library is pleased to  
announce a new service*



Creating  
LAS files  
from our logs  
or yours

**\$20.00 per  
curve!!**

**Quick  
turn-around**

Send us your log file  
or tell us which of  
ours you would like  
converted.

**316-265-8676**



**Kansas Geological  
Foundation  
Video / DVD Collection**

The KGF has an extensive  
collection of  
videos available for check-out at  
no charge.

Only pay for shipping back.

These are ideal for classroom or  
general public viewing.

See the web for titles &  
descriptions

[www.kgfoundation.org](http://www.kgfoundation.org)

Call 316-265-8676

Ask for Rhonda to check  
out videos

## **A shout out to Kansas Oil and Gas Industry**

### **Service Companies**

**Oil prices are recovering nicely with WTI about \$80 per barrel and Kansas posted price about \$70 per barrel**

**Now is the time to resume advertising in the KGS Bulletin**

**Let our several hundred members know that your company is still active and ready to work.**

**Your half page ad would look great here.**

**Color or black and white**

**Contact Kent Scribner at 316-640-1154**

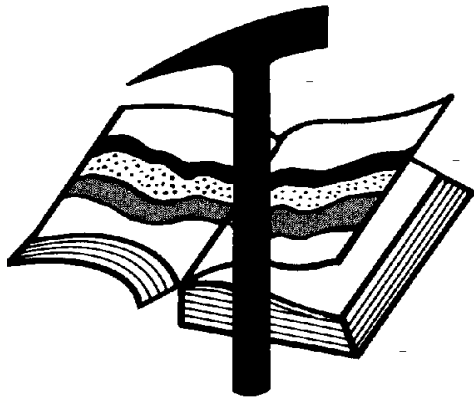
### **KGS members please check your files**

Fellow KGS members, please remember to check your files of elogs and geologist reports against the KGS paper library and the WDL before discarding them. I was contacted by John Morrison recently about a well I watched years ago that had some tops and DST info missing from his completion card. I took pics from my geo report of tops and DST results and sent them to John to update his card data. If I was to go through all of my files, I'm sure I have many logs and geo reports that are not in the files of either the KGS paper or the WDL. Before I hang things up in my career, I vow to go through all of my data and get it donated and scanned.

KCC rules allow an operator to hold information confidential for a two year period. As long as the well in question is older than the two year period, one can release the data. If one has concerns about alienating a client, of course, feel free to ask for permission.

Wes Hansen





# Kansas Geological Foundation

Web Site: [www.kgfoundation.org](http://www.kgfoundation.org)

**212 North Market  
Wichita, Kansas 67202**

A not-for-profit educational and scientific corporation

## **GOALS:**

- promote geology and earth science
- preserve geological records
- establish memorials and endowments
- support field trips and seminars
- financial aid and grants to students

**PLEASE HELP SUPPORT THE FOUNDATION**

## **Kansas Geological Foundation Services**

The Kansas Geological Foundation provides the following services as a part of the organization's commitment to educate the public regarding earth science.

### **Speaker's Bureau**

A list of speakers available to talk about various aspects of geology may be obtained by contacting Wes Hansen at the KGS Library, 265-8676. This service is free to the public.

### **DVD/Videotape Library**

The KGF maintains a DVD & videotape library focused primarily on the various fields of earth science. These tapes may be checked out without charge by the public. To obtain a list of tapes, please contact the KGS Library, 1704 S, Baehr Wichita, KS 67209 or call Wes Hansen at 265-8676.

The Kansas Geological Foundation was founded in March, 1989 as a not-for-profit corporation under the guidelines of section 501(c)(3) of the tax code to provide individuals and corporations the opportunity to further the science of geology. It is dedicated to providing charitable, scientific, literary and educational opportunities in the field of geology for the professional geologist as well as the general public.

KGF can receive in-kind donations through which the donor may receive a tax deduction. Of equal importance, the KGF provides the financial resources to sort, process and file this data at the KGS library. If you have a donation to make, please contact the KGF at 265-8676.

Your tax-deductible membership donation helps to defray the cost of processing donations and to support public education programs about the science of geology. Annual membership begins at \$50.00 per year. Donations of \$100.00 or more are encouraged through the following clubs:

<b>Century Club</b>	\$ 100 to \$ 499
<b>\$500 Club</b>	\$ 500 to \$ 999
<b>Millennium Club</b>	\$1000 to \$5000
<b>President's Club</b>	\$5000 and over

# *Kansas Geological Foundation*

## *Kansas Geological Foundation News*

### **Spring 2024 KGF Scholarship Recipients**

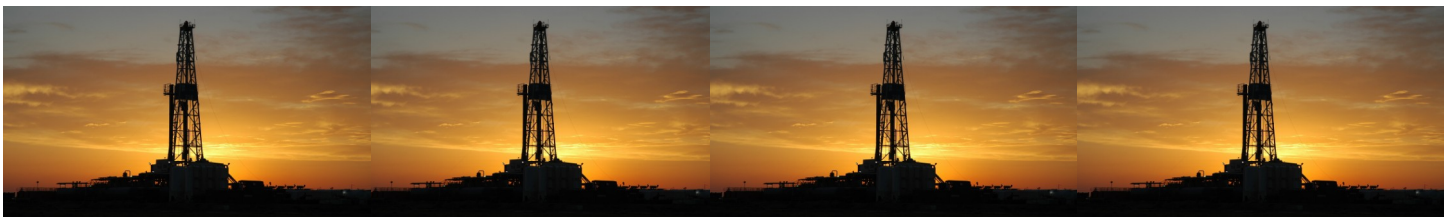
<b>Name</b>	<b>University</b>	<b>Scholarship</b>	<b>Amount</b>
Nicholas Ferry	University of Kansas	KGF Scholarship	\$1000.00
Julia Schwartz	Wichita State University	KGF Scholarship	\$1000.00
Luqman Olawale	Kansas State University	KGF Scholarship	\$1000.00
Adam Love	University of Kansas	KGF Scholarship	\$1000.00

#### **KGF Grants**

**Sarah Lamm, PhD candidate at KU**

**\$2500.00 for Rocks and Rockets Event in Colby**

**August 2024**



# *Kansas Geological Foundation News*

Students: The KGF awards scholarships each December and May. Check with your department chairs for applications. You must submit complete applications by the deadline.

**Scholarship Applications for the Fall semester will be due by May 1, 2024.**

Grants to help with research on Kansas related geology are also considered for aid.

---

## **The Kansas Geological Foundation Needs You!**



By permission

The KGF provides the financial resources to sort, process and file, in-kind donations of geological data at the KGS library. Due in large part to the KGF this unique and rare well of information is being made available to all. Please consider telling your company management and colleagues about the benefits of a library that continues expanding in part because of the KGF.

**We very much value and need your financial support.**

### **KGF Officers and Board Members**

**Executive Director**      **Kerry Parham**  
**President -**                **Tom Dudgeon**  
**Vice President -**  
**Treasurer -**                **Jacob Dyson**  
**Secretary -**                 **Beth Isern**

### **Board Members**

**Brad Rine (24)**                **Dennis Hedke (24)**  
**Nick Hixon (25)**              **Kent Crisler**

---

**Scholarships - Nick Hixson**  
**Grants - Dennis Hedke**  
**Publicity - Wes Hansen**

**PLEASE SUPPORT THE INTEGRATION PROJECT BY DONATING FINANCIALLY TO THE KANSAS GEOLOGICAL FOUNDATION**

# Kansas Geological Foundation Memorials

KGS Member	Date Deceased	Memorial Established
Dan Bowles	09/89	1990
John Brewer	10/89	1990
George Bruce	08/89	1990
Robert Gebhart	01/90	1990
Ray Anderson, Jr.	11/90	1990
Harold McNeil	03/91	1991
Millard W. Smith	08/91	1991
Clinton Engstrand	09/91	1991
M.F. "Ted" Bear	10/91	1991
James & Kathryn Gould	11/91	1991
E. Gail Carpenter	06/91	1993
Benton Brooks	09/92	1992
Robert C. Armstrong	01/93	1993
Nancy Lorenz	02/93	1993
Norman R. Stewart	07/93	1993
Robert W. Watchous	12/93	1993
J. George Klein	07/94	1994
Harold C.J. Terhune	01/95	1995
Carl Todd	01/95	1995
Don R. Pate	03/95	1995
R. James Gear	05/95	1995
Vernon Hess	06/95	1995
E. K. Edmiston	06/95	1995
Jack Rine	07/95	1995
Lee Cornell	08/95	1995
John Graves	10/95	1995
Wilson Rains	10/95	1995
Heber Beardmore, Jr.	09/96	1996
Elmer "Lucky" Opfer	12/96	1996
Raymond M. Goodin	01/97	1997
Donald F. Moore	10/92	1997
Gerald J. Kathol	03/97	1997
James D. Davies	08/88	1997
R. Kenneth Smith	04/97	1997
Robert L. Dilts	05/97	1997
Delmer L. Powers	06/72	1997
Gene Falkowski	11/97	1997
Arthur (Bill) Jacques	01/98	1998
Bus Woods	01/98	1998
Frank M. Brooks	03/98	1998
Robert F. Walters	04/98	1998
Stephen Powell	04/98	1998
Deane Jirrels	05/98	1998
William G. Iversen	07/98	1998
Ann E. Watchous	08/98	1998
W.R. "Bill" Murfin	09/98	1998
Donald L. Hellar	11/98	1998
Joseph E. Rakaskas	01/99	1999
Charles W. Steincamp	02/99	1999
Robert and Betty Glover	10/96	1998
Howard E. Schwerdtfeger	11/98	1999
W. W. "Brick" Wakefield	03/99	1999
V. Richard Hoover	01/00	2000
Warren E. Tomlinson	01/00	2000
James A. Morris	01/00	2000
Eric H. Jager	03/00	2000
Kenneth W. Johnson	03/00	2000

# Kansas Geological Foundation Memorials

KGS Member	Date Deceased	Memorial Established
Dean C. Schaaque	03/00	2000
Fred S. Lillibridge	05/00	2000
Jerry A. Langrehr	07/00	2000
Clark A. Roach	07/00	2000
Floyd W. "Bud" Mallonee	10/00	2000
Ralph W. Ruuwe	09/00	2000
Robert L. Slamal	02/01	2001
Jerold E. Jespersen	06/01	2001
William A. Sladek	06/01	2001
Harlan B. Dixon	06/01	2001
Edward B. Donnelly	08/01	2001
Richard P. Nixon	02/02	2002
Robert W. Frensley	12/01	2002
Gerald W. Zorger	01/02	2002
Don L. Calvin	03/02	2002
Claud Sheats	02/02	2002
Merle Britting	2002	2002
Harold Trapp	11/02	2002
Donald M. Brown	11/02	2003
Elwyn Nagel	03/03	2003
Robert Noll	09/03	2003
Benny Singleton	09/03	2003
Jay Dirks	2003	2003
J. Mark Richardson	02/04	2004
John "Jack" Barwick	02/01	2004
Richard Roby	03/04	2004
Ruth Bell Steinberg	2004	2004
Gordon Keen	03/04	2004
Lloyd Tarrant	05/04	2004
Robert J. "Rob" Dietterich	08/96	2004
Mervyn Mace	12/04	2004
Donald Hoy Smith	04/05	2005
Richard M. Foley	06/05	2005
Wayne Brinegar	06/05	2005
Charles B. Moore	09/96	2005
Jack Heathman	05/06	2006
Charles Kaiser	09/06	2006
Rod Sweetman	08/06	2006
Karl Becker	10/06	2006
Frank Hamlin	10/06	2006
Marvin Douglas	12/06	2006
Robert W. Hammond	04/07	2007
Eldon Frazey	04/07	2007
Pete Amstutz	05/07	2007
Charles Spradlin	05/07	2007
Donald R. "Bob" Douglass	09/07	2007
Vincent Hiebsch	11/07	2007
Glen C. Thrasher	03/08	2008
Peg Walters	06/08	2008
Theodore "Ted" Sandberg	07/08	2008
James Ralstin	11/08	2008
Earl Brandt	04/09	2009
Walter DeLozier	05/09	2009
Don D. Strong	1/10	2010
John Stone	02/10	2010
Craig Caulk	03/10	2010
Joseph E. Moreland, Jr.	03/10	2010

# Kansas Geological Foundation Memorials

KGS Member	Date Deceased	Memorial Established
Gene Garmon	03/10	2010
James F. Dilts	05/10	2010
Jerry Pike	05/10	2010
Donald Hollar	06/10	2010
Delbert Costa	08/10	2010
John Tanner	08/10	2010
William (Bill) Owen	09/10	2010
Harold (Hal) Brown	10/10	2010
Edmund G. Lorenz	11/10	2010
Thomas E. Black	05/11	2011
Wayne E. Walcher	07/11	2011
Henry F. Filson	07/11	2011
Thomas Ray	07/11	2011
Edgar E. Smith	09/11	2012
Marilyn Messinger	06/13	2013
Micheal Mitchell	09/13	2013
Orvie Howell	11/13	2013
James Thompson	11/13	2013
Dick Rowland	09/13	2014
Robbie Thompson	12/13	2014
Kris Kennedy	04/14	2015
Annette Hedke	02/15	2015
James Devlin	04/15	2015
Robert Gensch	09/15	2015
Jerald Rains	05/16	2016
Max Houston	05/16	2016
Robert "Gus" Messinger	01/17	2017
Jimmy Wayne Gowens	04/17	2017
Walter H. Martz Jr.	01/18	2018
Gary Sandlin	01/17	2018
Douglas McGinness	12/16	2018
Allen Siemens	06/18	2018
Ernest R. "Ernie" Morrison	09/18	2018
E. G. "Elbie" McNeil	12/18	2018
Robert Maxwell (Bob) Euwer	1/19	2019
J. Fred Hambright	12/18	2019
W. Lynn Watney	7/19	2019
Byron Hummon	12/18	2019
Mike Raymond	11/19	2019
James Roberts, Jr.	3/19	2019
Herb Johnson	8/19	2020
Lloyd Parrish	2/20	2020
Bruce Reed	5/20	2020
Bob Scull	6/20	2020
Thornton E. Anderson	7/20	2020
Don Shawver	12/16	2020
Phillip Hart	12/20	2021
Timothy Lauer	05/21	2021
Fredrick Stump	09/21	2021
Larry J. Richardson	10/21	2021
Robert Cowdery	12/23	2023

**18 Drilling Rigs**  
**To depth of 9,500 ft.**



WESTERN KANSAS  
SOUTHERN NEBRASKA  
EASTERN COLORADO  
OKLAHOMA PANHANDLE

For contract information contact:

**William Murfin**  
Drilling Manager

**316-258-8888 (Direct)**  
**316-267-3241 (Main)**

**250 N. Water, Ste. 300**  
**Wichita, KS 67202**

**DUKE**  
**DRILLING COMPANY**

**ROTARY DRILLING CONTRACTOR**

620 Hubbard PO Box 823  
Great Bend, KS 67530

100 S. Main, Ste. 410,  
Wichita, KS 67202

*Your Company*

*1/8 page ad here*

**BULLETIN CONTENT POLICY**

Effective January 1, 2018, only ads for service companies and geologists offering their services will be permitted in the KGS Bulletin. Furthermore, only content of geologic interest or official KGS functions (technical talks, annual banquet, golf tourney, picnic etc.) will be permitted in this bulletin. This policy is in keeping with maintaining a professional standard for this publication. Any interpretation of this policy rests solely with the editor of this bulletin.



**AAPG Needs You!**

**Professional geoscientists, share your world!**

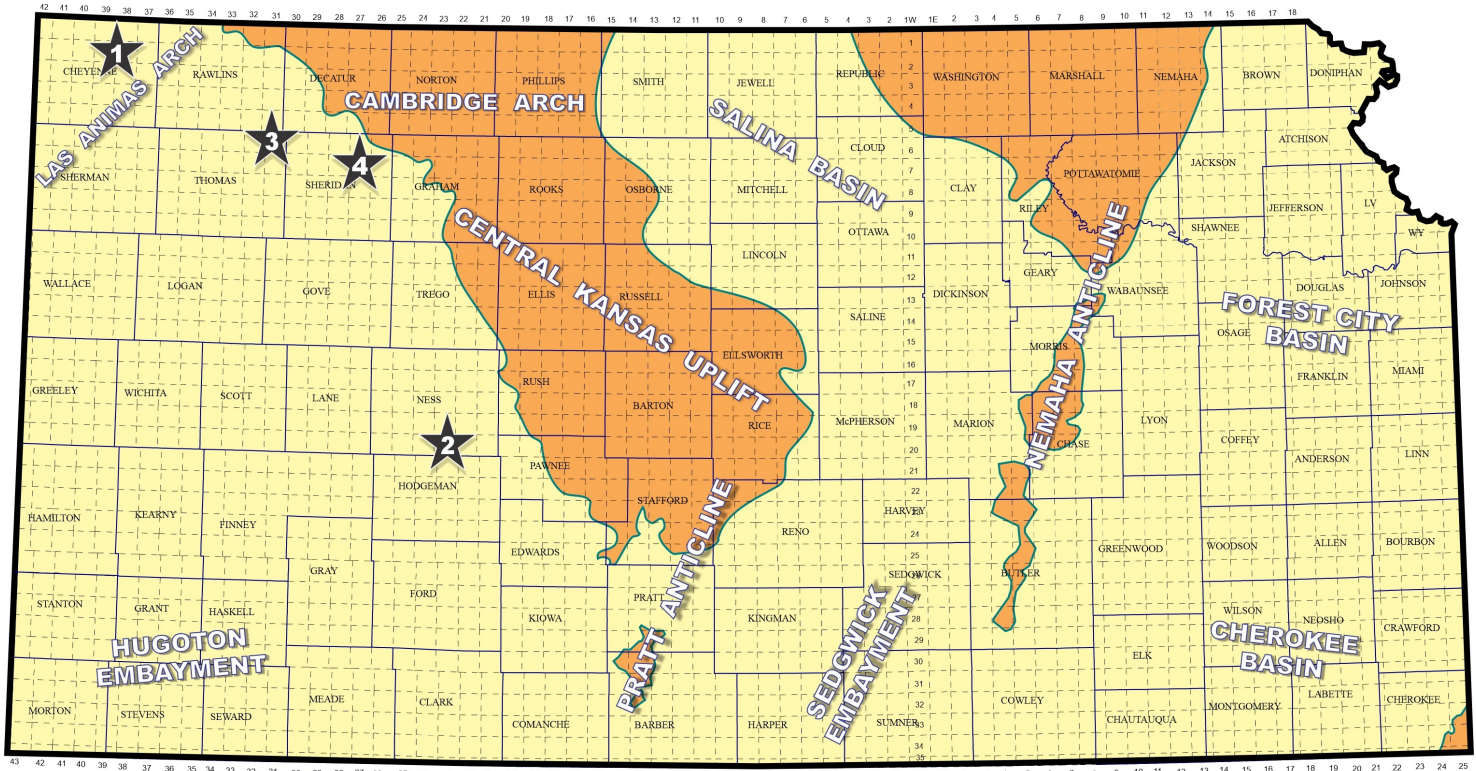
The Mid Continent Section has **17 AAPG Student Chapters**, but only **3 Visiting Geoscientists**...which makes it almost impossible to have a professional geoscientist visit to each school at least once a year or even once every two years. The aim of AAPG's program is to give students a flavor of a professional life in energy resources. It also hopes to encourage dialog between industry and academia. To be a Visiting Geoscientist bearing the AAPG flag, you are asked to have at least 5 years of experience and make at least one visit per year to a university. It can be a school with an AAPG Student Chapter, or a college/university without one. Your choice.

The Mid Continent schools with Student Chapters are: Missouri University, Fort Hays State University, Iowa State University, Kansas State University, Missouri State University, University of Nebraska, Northwest Missouri State University, Oklahoma State University, University of Oklahoma, University of Arkansas, University of Iowa, University of Kansas, University of Missouri, Columbia University of Tulsa and Wichita State University.

Contact Robbie Gries, co-Chair VGP committee, Denver, if you are interested in learning more. [rrgries@aol.com](mailto:rrgries@aol.com)

# Exploration Highlights

By John H. Morrison, III  
Independent Oil & Gas Service



Map courtesy of Marc Summervill

1. Murfin Drilling Company, of Wichita, KS, has discovered Marmaton (Fort Scott) crude oil reserves at a site located in the SE/4 of section 17- T1s- R38W in Cheyenne County. Company tools drilled the #1-17 Wiese to a total depth of 4,650 ft. Completion details remain confidential at this time. The closest nearby production is about one and one-half miles away in the Devil's Canyon Northeast pool. The "Wiese" new pool discovery lies about fifteen miles north and three miles west of the town of Bird City, Kansas. (Ref: API 15-023-21649)

Elsewhere in Cheyenne County, Murfin Drilling Company has completed the #1-21 Callicrate as a Lansing - Kansas City (LKC) oil producer in the SE/4 of section 21- T3s- R39W. Company tools bottomed the well at a total depth of 5,200 ft. Completion details remain confidential. The well establishes the "KMM West" pool. Field area lies about six miles east of the tow of St Francis, Kansas. The well lies over one mile west of Murfin's "KMM" pool discovery well in section 22, which was put on pump on September 2022. The well has produced 14,125 BO from the LKC formation since its founding. (Ref: API 15-023-21650)

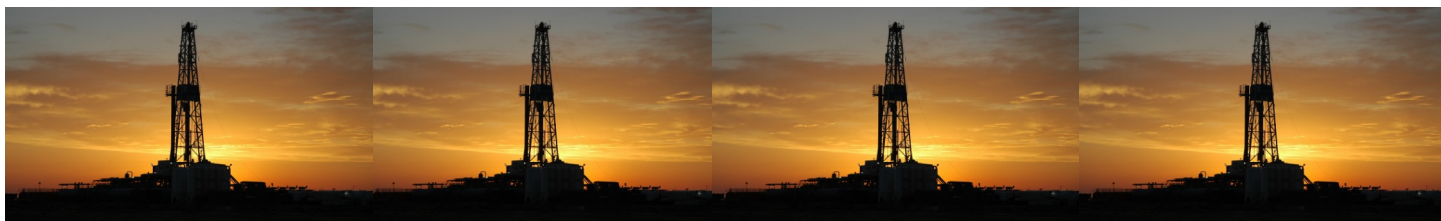
2. Triple Crown Operating, LLC, of Tulsa, OK., has established the "Reinert East" oil field in



the NE/4 of section 35- T20s- R23W in Ness County. The #1-35 David was drilled to a total depth of 4,500 ft. Mississippian oil is being produced from perforations shot from 4381 to 4396 ft and was put on pump for 5 BOPD, no water. The new pool is located nearly twelve miles south and three miles east of Ness City, Kansas. (Ref: API 15-135-26212)

3. American Warrior, of Garden City, KS, has discovered oil deposits in the Marmaton (Myrick Station) formation at the #1-16 Patricia, located in the SW/4, section 16- T6s- R 31W in Thomas County. The well was drilled to a total depth of 4,635 ft with Duke Drilling tools. No completion details have been released. Drill site is located over one and one-half miles southwest of the “CAP” oil field (Lansing - Kansas City oil), which was also discovered by American Warrior in November 2023. American Warrior’s new pool was named “Patricia.” The field area is located about four miles north and two miles west of Rexford, Kansas. (Ref: API 15-193-21123)

4. Darrah Oil Company, of Wichita, KS, has successfully washed-down the #17-1 KU Endowment well in Sheridan County and is now producing oil from the Lansing - Kansas City (LKC) formation. The wildcat well was originally completed as a dry hole in 2021 at a total depth of 4,180 ft. The “Resurrection” pool discovery well is in the NE/4 of section 17- T7s- R27W, about six miles north and five miles east of Hoxie, Kansas. Completion details on the work-over remain confidential. The closest production in the vicinity is in the “Rejuvenation” pool, located over four miles away which has produced 82,523 BO from the LKC. (Ref: API 15-179-21472)



## May 2024

Sun	Mon	Tue	Wed	Thu	Fri	Sat
			1	2	3	4
5	6	7	8	9	10	11
12	13	14 KGS Board	15 KGF Board	16	17	18
19	20	21	22	23	24	25
26	27	28	29	30	31	

## June 2024

Sun	Mon	Tue	Wed	Thu	Fri	Sat
						1
2	3	4	5	6	7	8
9	10	11 KGS Board	12	13	14	15
16	17	18	19 KGF Board	20	21	22
23	24	25	26	27	28	29
30						